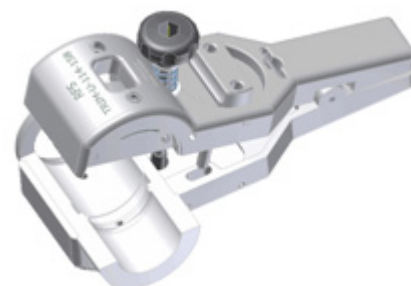




This special trimming tool improves the cable preparation prior to connector attachment. No further tools are required to prepare the cable for the connector attachment. This is due to the unique design of the trimming tool, which combines all necessary functions in one tool. It can be used for RADIAFLEX® 1 1/4" foam dielectric cables in combination with the RADIAFLEX® P-Series connector.



TRIM-SET for RADIAFLEX 1 1/4"

The Universal Trimming Tool Series offers the additional advantage to be convertible to different connector families and cable types and sizes (CELLFLEX® cables and RADIAFLEX® cables 1 1/4" and 1 5/8"); only by changing the inserts. Different inserts are available as optional items, for references see below or contact your RFS sales contact.

FEATURES / BENEFITS

- **Universal Trimming Tool concept**
One basic tool can be used for cable sizes 1 1/4" and 1 5/8" only by changing the insert
- **Precision cable preparation tool**
Always exact and repeatable trimming dimensions.
- **Intuitive use of tool**
Easy and precise preparation of cables for connector installation.
- **Long-lasting cutting blades**
Easy to clean, smooth dielectric surface improves IM performance.

External Document Links

Notes

Other available inserts to convert the tool for use with other connector families or cable sizes:

- **TRIM-IL114-001** for connectors B32, 062/072 on cable LCFS/UCF114-50
- **TRIM-IL114-D01** for connectors D01 on cable LCFS/UCF114-50
- **TRIM-IL114-C02** for connectors C02 on cable LCFS/UCF114-50
- **TRIM-IL158-001** for connectors B32, 022, 062/072 on cable LCF158-50
- **TRIM-IL158-D01** for connectors D01 on cable LCFS/UCF158-50
- **TRIM-IL158-C02** for connectors C02 on cable LCF158-50
- **TRIM-IR114-P01** for all connectors on RADIAFLEX® cables 1 1/4" with copper foil outer conductor except for jacket options JFCLA
- **TRIM-IR158-P01** for all connectors on RADIAFLEX® cables 1 5/8" with copper foil outer conductor except for jacket options JFCLA
- **TRIM-IR158-P02** for all connectors on RADIAFLEX® cables 1 5/8" with copper foil outer conductor except for jacket options JFCLA

Technical features

STRUCTURE

Product Line		Coaxial Cable Accessories
Product Type		Tool
Transmission Line Type		RADIAFLEX radiating cables of RLK, RAY, RLF series
Coaxial Cable Type		Foam dielectric radiating cables with copper foil outer conductor
Cable Size		1 1/4"
Type of Tool		Combination Cable Preparation Tool
Configuration		Universal Trimming Tool

ACCESSORIES

Spare Part / Useful Accessories		Spare blades : TRIM-B34
---------------------------------	--	-------------------------



MECHANICAL SPECIFICATIONS

Color		Aluminum Color
Material		Aluminum Alloy
Length	mm (in)	260 (10.2)
Height	mm (in)	130 (5.12)
Width	mm (in)	110 (4.33)

PACKAGING INFORMATION

Package Quantity		1
Weight per piece	kg (lb)	1.75 (3.86)