

SureLAN® Cat.7

S/FTP <1000 MHz> Duct Grade PE



Application

Dual jacket high performance Category 7 cable with a protective PE sheath which is water, UV and moisture resistant. The cable can be installed outdoors in ducts as well as being suitable for use indoors when the PE sheath is removed due to the LSZH inner jacket with enhanced reaction-to-fire performance according to CPR classification Cca.

Cable Design

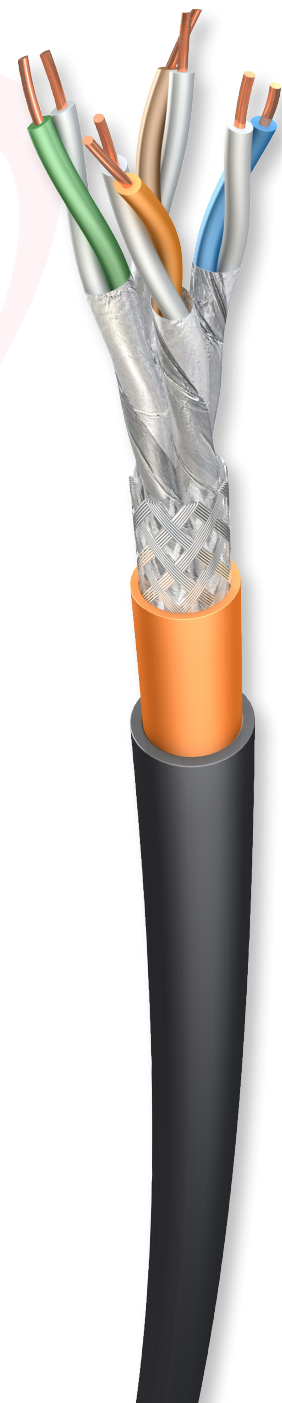
Conductor	Bare copper wire (23awg)
Core Insulation	Skin/Foam/Skin PE Insulation
Core Identification	wh-bu, wh-or, wh-gn, wh-bn
Core Stranding	cores twisted to pairs
Pair Screen	Individual Aluminium/polyester tape
Cable lay up	4 shielded pairs cabled together
Overall Screen	Tinned copper wire braid
Inner Jacket	LSZH FireFigher® Ø 7,30 ± 0.20 mm [CPR Cca]
Outer Jacket	MDPE- Medium Density Polyethylene Ø 9,30 mm nom. [CPR Fca]

Standards

Industrial Standards	EIA/TIA-568-C.2, IEC 61156-5 , EN 50173-1, EN 50288-4-1, ISO/IEC 11801 Class F
----------------------	--

Specification

Part Number	Type
27475C	Cat7 S/FTP 4x2xAWG23/1 <1000 MHz> Duct Grade



SureLAN[®] Cat.7

S/FTP <1000 MHz> Duct Grade PE

Colour Code Chart

Pair	Colour
1	Blue + White
2	Orange + White
3	Green + White
4	Brown + White

Electrical Data @ 20°C

Max. Conductor Resistance	< 9.5 Ω / km
Max. Resistance Unbalance	< 2 %
Min. Insulation Resistance	5000 MΩ x m
Mutual Capacitance	56 pF / m
Impedance at 100 MHz	100 ± 5 Ω
Velocity of Propagation	76 %
Delay Skew	25 ns / 100 m
Transfer Impedance at 1 MHz	< 10 mΩ/km
Transfer Impedance at 10 MHz	< 10 mΩ/km
Transfer Impedance at 30 MHz	< 30 mΩ/km
Segregation Class	D
Test Voltage	1000 V
Operating Voltage	125 V

SureLAN[®] Cat.7

S/FTP <1000 MHz> Duct Grade PE

Electrical Characteristics

Frequency (MHz)	Attenuation (dB/100m)	NEXT (dB)	ACR (dB/100m)	EL-FEXT (dB/100m)	Return Loss (dB)
1	2,0	104	99	95	24
4	4,0	104	97	93	30
10	4,9	101	95	92	32
100	17,3	100	83	77	34
250	28,2	95	63	70	27
500	42,0	95	56	62	24
600	44,0	88	45	60	22
800	55,5	83	28	56	20
900	57,3	80	23	53	18
1000	59,1	77	23	50	18

Belcom Cables Ltd. ("Belcom") reserves the right to make changes to the product described in this specification without prior notice. Belcom does not assume any liability which may occur due to the use of the specification described herein. Drawings are not to scale unless otherwise specified and are provided for general and informational purposes only. All values represented in this specification should be used as a guide only and exact product details can be confirmed at point of enquiry.